

Statistical Significance of Minimum of the Order Parameter Fluctuations of Seismicity Before Major Earthquakes in Japan

N. V. SARLIS,¹ E. S. SKORDAS,¹ S.-R. G. CHRISTOPOULOS,¹ and P. A. VAROTSOS¹

Abstract—In a previous publication, the seismicity of Japan from 1 January 1984 to 11 March 2011 (the time of the *M*₉ Tohoku earthquake occurrence) has been analyzed in a time domain called natural time χ . The order parameter of seismicity in this time domain is the variance of χ weighted for normalized energy of each earthquake. It was found that the fluctuations of the order parameter of seismicity exhibit 15 distinct minima—deeper than a certain threshold—1 to around 3 months before the occurrence of large earthquakes that occurred in Japan during 1984–2011. Six (out of 15) of these minima were followed by all the shallow earthquakes of magnitude 7.6 or larger during the whole period studied. Here, we show that the probability to achieve the latter result by chance is of the order of 10^{-5} . This conclusion is strengthened by employing also the receiver operating characteristics technique.

Key words: Natural time analysis, Japan, receiver operating characteristics, Monte Carlo calculation, fluctuations, order parameter of seismicity.

1. Introduction

Earthquakes (EQs) exhibit complex correlations in time, space, and magnitude (TELESCA *et al.* 2002; EICHNER *et al.* 2007; HUANG 2008, 2011; TELESCA and LOVALLO 2009; TELESCA 2010; LIPPIELLO *et al.* 2009, 2012; LENNARTZ *et al.* 2008, 2011; SARLIS 2011; RUNDLE *et al.* 2012; TENENBAUM *et al.* 2012; SARLIS and CHRISTOPOULOS 2012). The EQ scaling laws (TURCOTTE 1997) point to the view (e.g., HOLLIDAY *et al.* 2006) that a mainshock occurrence may be considered an approach to a critical point. Following this view, VAROTSOS *et al.* (2005) (see also SARLIS *et al.* 2008; VAROTSOS *et al.* 2011b) suggested that the

variance κ_1 of the natural time χ (see Sect. 2) may serve as an order parameter for seismicity.

The study of the fluctuations of this order parameter, denoted β (SARLIS *et al.* 2010), becomes of major importance near the critical point, i.e., near the mainshock occurrence. We assume that a few months represent the period near criticality before each mainshock (VAROTSOS *et al.* 2011a, 2012a, b, 2013) motivated by the following aspect: the lead time of seismic electric signals (SES) activities that are considered to be emitted when the system enters the critical stage (VAROTSOS and ALEXOPOULOS 1986; VAROTSOS *et al.* 1993) ranges from a few weeks to a few months (VAROTSOS and LAZARIDOU 1991; TELESCA *et al.* 2009, 2010; VAROTSOS *et al.* 2011b).

Recently, the natural time analysis of seismicity in Japan has been investigated (SARLIS *et al.* 2013) using the Japan Meteorological Agency (JMA) seismic catalog and considering all the 47,204 EQs of magnitude $M_{JMA} \geq 3.5$ in the period from 1984 to the time of the *M*₉ Tohoku EQ (i.e., 11 March 2011), within the area 25°–46°N, 125°–148°E depicted in Fig. 1. It was found that the fluctuations of the order parameter of seismicity exhibit 15 distinct minima—deeper than a certain threshold—1 to around 3 months before the occurrence of large earthquakes. Six (out of 15) of these minima were followed by all the shallow earthquakes of magnitude 7.6 or larger during the whole period studied (their epicenters are shown in Fig. 1). Among the minima, the minimum before the *M*₉ Tohoku EQ was the deepest [this EQ was also preceded by a seismic quiescence, as found by HUANG and DING (2012) through an improved region-time-length algorithm]. It is the scope of the present paper to investigate the statistical significance of these results obtained by SARLIS *et al.* (2013).

¹ Department of Solid State Physics and Solid Earth Physics Institute, Faculty of Physics, School of Science, National and Kapodistrian University of Athens, Panepistimiopolis Zografos, 157 84 Athens, Greece. E-mail: nsarlis@phys.uoa.gr; eskordas@phys.uoa.gr; strichr@yahoo.gr; pvaro@otenet.gr

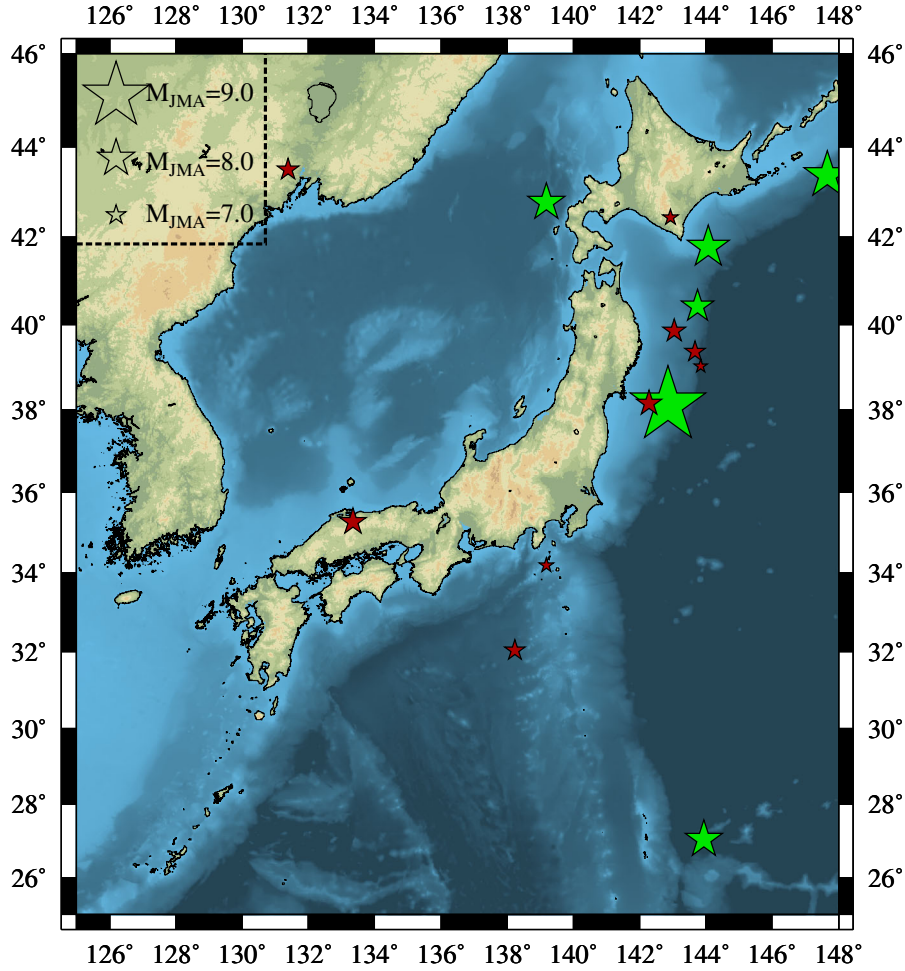


Figure 1

Epicenters (*green stars*) of all shallow EQs with magnitude 7.6 or larger (marked in **bold** in Table 1) within the depicted area $N_{25}^{46} E_{125}^{148}$ since 1 January 1984 until the *M*₉ Tohoku EQ. The *red stars* indicate the epicenters of the smaller EQs listed in Table 1

2. Methodology

Natural time analysis has been shown (ABE *et al.* 2005) to extract the maximum information possible from a given time series. For a time series comprising N events, we define the natural time for the occurrence of the k th event of energy Q_k by $\chi_k = k/N$ (VAROTSOS *et al.* 2001, 2002). We then study the evolution of the pair (χ_k, p_k) where

$$p_k = Q_k / \sum_{n=1}^N Q_n \quad (1)$$

is the normalized energy and construct the quantity κ_1 which is the variance of χ weighted by p_k

$$\kappa_1 = \sum_{k=1}^N p_k \chi_k^2 - \left(\sum_{k=1}^N p_k \chi_k \right)^2 \equiv \langle \chi^2 \rangle - \langle \chi \rangle^2, \quad (2)$$

where the quantity Q_k —see Eq. (1)—is estimated by means of the usual relation (KANAMORI 1978)

$$Q_k \propto 10^{1.5M_k}, \quad (3)$$

(e.g., VAROTSOS *et al.* 2005, 2011a, 2012a, b, c; SARLIS *et al.* 2010; RAMÍREZ-ROJAS and FLORES-MÁRQUEZ 2013; VAROTSOS *et al.* 2013; FLORES-MÁRQUEZ *et al.* 2014).

The detailed procedure for the computation of β has been described by SARLIS *et al.* (2013). In short, they considered excerpts of the JMA catalog

comprising W consecutive EQs and defined the quantity $\beta_W \equiv \sigma(\kappa_1)/\mu(\kappa_1)$ as the variability of the order parameter $\kappa_1 - \mu(\kappa_1)$ and $\sigma(\kappa_1)$ stand for the average value and the standard deviation of the κ_1 values for this excerpt of length W . For such an excerpt, we form its subexcerpts consisting of the n th to $(n+5)$ th EQs, ($n = 1, 2, \dots, W-5$) and compute κ_1 for each of them by assigning $\chi_k = k/6$ and $p_k = Q_k / \sum_{n=1}^6 Q_n$, $k = 1, 2, \dots, 6$, to the k th member of the subexcerpt (since at least $l = 6$ EQs are needed for obtaining reliable κ_1). We iterate the same process for new subexcerpts comprising $l = 7$ members, 8 members, ...and finally W members. Then, we compute the average and the standard deviation of the thus-obtained ensemble of κ_1 values [examples of the κ_1 values resulted from subexcerpts comprising $l = 6, 40, 100, 200$, and 300 members (EQs) are given in Fig. 2 for the last ≈ 10 year period before the $M9$ Tohoku EQ]. The β_W value for this excerpt W was assigned to the $(W+1)$ th EQ in the catalog, the target EQ. Hence, for the β_W value of a target EQ, only its past EQs are used in the calculation. The time evolution of the β value was then pursued by sliding the excerpt W through the EQ catalog. Since $\approx 10^2$ EQs with $M_{JMA} \geq 3.5$ occur per month on average, the values $W = 200$ and $W = 300$ were chosen, which would cover a period of a few months before each target EQ. As an example, we depict in Fig. 3

the values of β_{200} and β_{300} (red, left scale) along with all $M_{JMA} \geq 6$ EQs (black, right scale) versus the conventional time during the ≈ 10 -year period before the $M9$ Tohoku EQ, i.e., since 1 January 2001 until 11 March 2011. The corresponding β values for the remaining period, i.e., since 1 January 1984 until 31 December 2010, can be visualized in SARLIS *et al.* (2013). Distinct minima of β_{200} and β_{300} —deeper than a certain threshold and having a ratio β_{300}/β_{200} close to unity (in the range of 0.95 to 1.08)—have been identified 1–3 months before all shallow EQs with magnitude 7.6 or larger in the period from 1984 to the time of the $M9$ Tohoku EQ. Especially, the minima of β_{200} precede the EQ occurrence by a lead time Δt_{200} which is at the most 96 days (cf. the entries in bold in the first and the third column of Table 1, see also Table 1 of SARLIS *et al.* 2013). Moreover, nine additional similar minima have been identified (see Table 2 of SARLIS *et al.* 2013) during the same period, which were followed by large EQs of smaller magnitude within 3 months. These 15 ($=6+9$) minima are summarized here in Table 1.

3. Statistical Evaluation by Means of Monte Carlo

The above 15 β minima have been identified during the ≈ 27 -year study period comprising

Table 1

The 15 minima of β_{200} that were found (SARLIS *et al.* 2013) to precede large EQs in Japan during the period 1 January 1984 to 11 March 2011

| Date of β_{200} minimum | Value of β_{200} minimum | EQ date | Lat. (°N) | Long. (°E) | M | Δt_{200} (months) |
|-------------------------------|--------------------------------|-------------------|--------------|---------------|------------|---------------------------|
| 13-10-1986 | 0.254 | 14-01-1987 | 42.45 | 142.93 | 6.6 | 3 |
| 08-08-1989 | 0.278 | 02-11-1989 | 39.86 | 143.05 | 7.1 | 3 |
| 05-04-1992 | 0.250 | 18-07-1992 | 39.37 | 143.67 | 6.9 | 3 |
| 23-05-1993 | 0.293 | 12-07-1993 | 42.78 | 139.18 | 7.8 | 2 |
| 1993-07-13 | 0.188 | 12-10-1993 | 32.03 | 138.24 | 6.9 | 3 |
| 30-06-1994 | 0.295 | 04-10-1994 | 43.38 | 147.67 | 8.2 | 3 |
| 15-10-1994 | 0.196 | 28-12-1994 | 40.43 | 143.75 | 7.6 | 2–3 |
| 17-02-1998 | 0.237 | 31-05-1998 | 39.03 | 143.85 | 6.4 | 3 |
| 12-04-2000 | 0.229 | 01-07-2000 | 34.19 | 139.19 | 6.5 | 3 |
| 09-07-2000 | 0.243 | 06-10-2000 | 35.27 | 133.35 | 7.3 | 3 |
| 12-05-2002 | 0.244 | 29-06-2002 | 43.50 | 131.39 | 7.0 | 2 |
| 03-07-2003 | 0.289 | 26-09-2003 | 41.78 | 144.08 | 8.0 | 3 |
| 11-06-2005 | 0.286 | 16-08-2005 | 38.15 | 142.28 | 7.2 | 2 |
| 30-11-2010 | 0.232 | 22-12-2010 | 27.05 | 143.94 | 7.8 | 1 |
| 05-01-2011 | 0.157 | 11-03-2011 | 38.10 | 142.86 | 9.0 | 2 |

The six cases that were followed by all the shallow EQs of magnitude 7.6 or larger are shown in bold

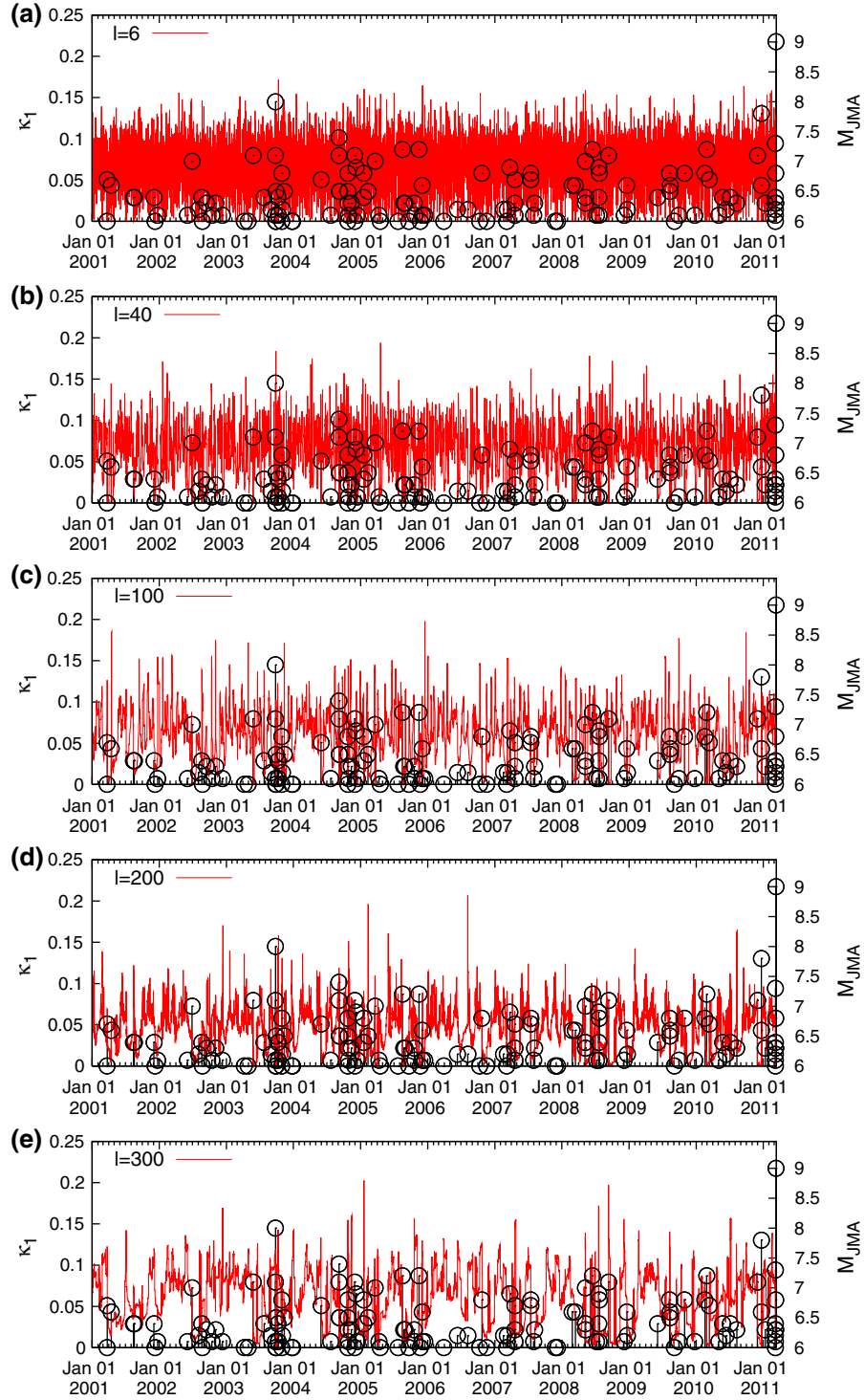


Figure 2

Plots showing how the κ_l values (left scale) fluctuate during the last ≈ 10 -year period before the M_9 Tohoku EQ, i.e., since 1 January 2001 until 11 March 2011. Here, we depict examples of the κ_l values computed from subexcerpts comprising $l = 6$ (a), 40 (b), 100 (c), 200 (d), and 300 (e) EQs. The EQs with $M_{JMA} \geq 6$ (right scale) are also depicted by the vertical black lines ending at circles

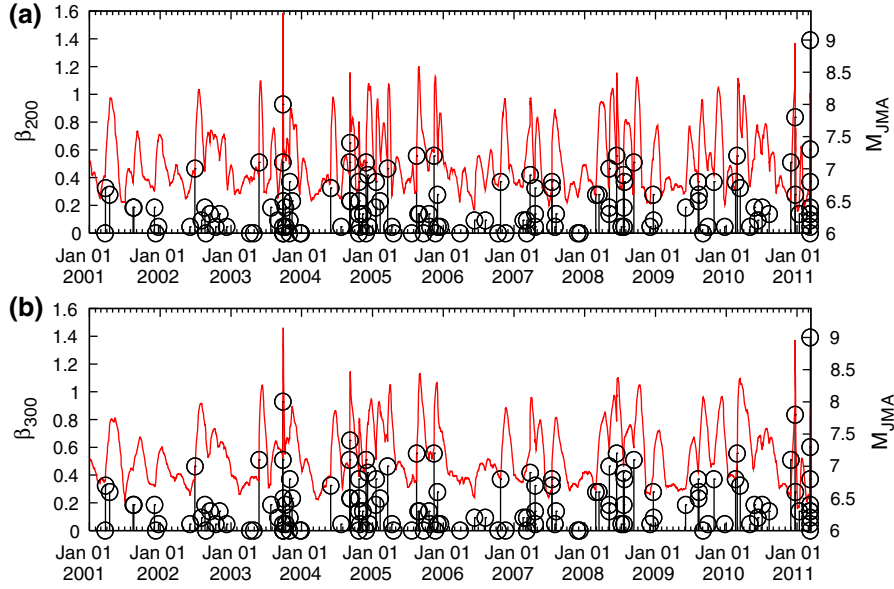


Figure 3

Plots of the β values (left scale) during the last ≈ 10 -year period before the M9 Tohoku EQ, i.e., since 1 January 2001 until 11 March 2011 for $W = 200$ (a) and $W = 300$ (b) along with all $M_{JMA} \geq 6$ EQs (right scale)—vertical black lines ending at circles—versus the conventional time

9,931 days. The maximum lead time for $W = 200$ was found to be, as mentioned, $\Delta t_{200} = 96$ days. Since the β_W values are calculated after the occurrence of each of the 47,204 EQs, we can estimate the probability p_1 to obtain by chance a date having a lead time smaller than 97 days before an EQ of magnitude 7.6 or larger by considering the ratio of the EQs that occurred up to 96 days before an EQ of magnitude 7.6 or larger over the total number of the EQs considered. This value results in $p_1 = 4,768/47,204 \approx 10.1\%$, and hence the probability to obtain at least six such dates when performing 15(=6+9) attempts can be obtained by the binomial distribution which leads to $p_{bin} = 0.237\%$. Of course, this probability does not correspond to the probability to obtain the results of SARLIS *et al.* (2013) by chance since the six successful dates may not correspond to different EQs of magnitude 7.6 or larger.

In order to quantify the latter probability, we performed a Monte Carlo calculation in which we generated 10^6 times, 15 uniformly distributed random integers from 1 to 47,204 to select 15 EQs from the JMA catalog, the occurrence dates of which have been compared with the occurrence dates of the six shallow

EQs with magnitude 7.6 or larger in order to examine whether all these six EQs have been preceded by randomly selected EQs with a maximum lead time of 96 days. This Monte Carlo calculation has been run 10^3 times and the corresponding probability is $p_{MC} = 0.00436(64)\%$ where the number in parenthesis denotes the standard deviation. Thus, we find that the probability to obtain by chance the results found by SARLIS *et al.* (2013) is of the order of 10^{-5} . We clarify that this probability refers only to the occurrence time of major EQs, while the relevant calculation for an EQ prediction method (e.g., the one based on SES, VAROTSOS and ALEXOPOULOS 1984a, b; VAROTSOS *et al.* 1988) should also consider the probabilities to obtain the epicentral area and the magnitude of the impending EQs (VAROTSOS *et al.* 1996a, b).

4. Statistical Evaluation by Means of Receiver Operating Characteristics

A receiver operating characteristics (ROC) graph (FAWCETT 2006) is a technique to depict the quality of binary predictions. It is a plot of the hit rate (or true positive rate) versus the false alarm rate (or false

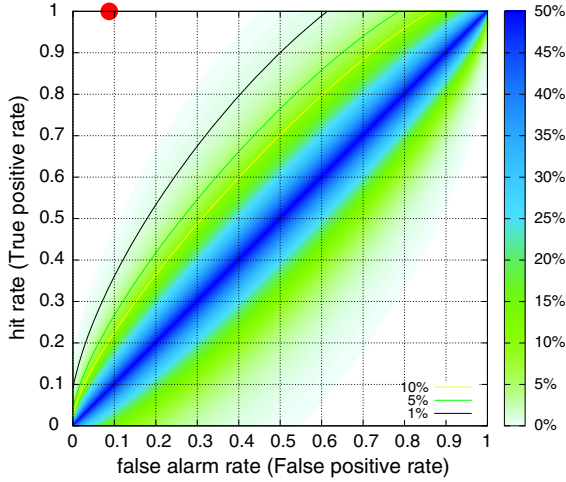


Figure 4

Receiver operating characteristics diagram for $P = 6$ and $Q = 103$ in which the *red circle* corresponds to the results obtained by SARLIS *et al.* (2013). This *circle* is far away from the *blue diagonal* that corresponds to random predictions. The colored contours present the p value to obtain by chance an ROC point based on k -ellipses (SARLIS and CHRISTOPOULOS 2014); the k -ellipses with $p = 10, 5$, and 1% are also shown

positive rate), as a function of the total rate of alarms, which is tuned by a threshold in the predictor. The hit rate is the ratio of the cases for which the alarm was on and a significant event occurred over the total number of significant events. The false alarm rate is the ratio of the cases for which the alarm was on and no significant event occurred over the total number of non-significant events. Only if the hit rate exceeds the false alarm rate, a predictor is useful [for example, the ROC analysis has been recently used by TELESKA *et al.*, (2014) to discriminate between seismograms of tsunamigenic and non-tsunamigenic EQs]. Random predictions generate equal hit and false alarm rate on average (thus, falling on the blue diagonal in Fig. 4 that will be discussed later), and the corresponding ROC curves exhibit fluctuations which depend on the positive P cases (i.e., the number of significant events) and the negative Q cases (i.e., the number of non-significant events) to be predicted. The statistical significance of an ROC curve depends (MASON and GRAHAM 2002) on the area under the curve A in the ROC plane. MASON and GRAHAM (2002) have shown that $A = 1 - U/(PQ)$, where U follows the Mann–Whitney U statistics (MANN and WHITNEY 1947). Very recently, a visualization scheme for the statistical

significance of ROC curves has been proposed (SARLIS and CHRISTOPOULOS 2014). It is based on k -ellipses which are the envelopes of the confidence ellipses—cf. a point lies outside a confidence ellipse with probability $\exp(-k/2)$ —obtained when using a random predictor and vary the prediction threshold. These k -ellipses cover the whole ROC plane and upon using their A we can have a measure (SARLIS and CHRISTOPOULOS 2014) of the probability p to obtain by chance (i.e., using a random predictor) an ROC curve passing through each point of the ROC plane.

In the present case, we divide the whole period covering 27 years and almost 3 months into 109 3-month periods (i.e., $P + Q = 109$) out of which only six included significant events ($P = 6$). These six significant events were successfully predicted by the aforementioned minima of Table 1 of SARLIS *et al.* (2013) (written here in bold in Table 1) that preceded all the shallow EQs with magnitude 7.6 or larger during the study period. Hence, the hit rate is 100 %. On the other hand, the nine minima which were followed within 3 months by smaller EQs (see Table 2 of SARLIS *et al.* 2013 which are not marked in bold in Table 1) may be considered false alarms giving rise to a false alarm rate of $9/103 \approx 8.74\%$. By using the FORTRAN code VISROC.f provided by SARLIS and CHRISTOPOULOS (2014) we obtain: (a) the ROC diagram of Fig. 4 in which we depict by the red circle the operation point that corresponds to the results obtained by SARLIS *et al.* (2013) and (b) the probability p to obtain this point by chance based on k -ellipses which results in $p_{ROC} = 0.00314\%$. Interestingly, the value of p_{ROC} is compatible with p_{MC} estimated in the previous section strengthening the conclusion that the probability to obtain the findings of SARLIS *et al.* (2013) by chance is of the order of 10^{-5} .

5. Conclusions

Recently, the seismicity of Japan was analyzed in natural time from 1 January 1984 to 11 March 2011 using sliding natural time windows of length W comprising the number of events that would occur in a few months. Fifteen distinct minima of the variability β of the order parameter of seismicity were identified 1–3 months before large EQs. Among these

minima, six were followed by the stronger EQs, namely all the six shallow EQs with $M_{JMA} \geq 7.6$ that occurred in Japan during this ≈ 27 year period. The probability to obtain the latter result by chance is of the order of 10^{-5} as shown here using Monte Carlo calculation. The same conclusion is obtained when using the ROC technique.

REFERENCES

- ABE S, SARLIS NV, SKORDAS ES, TANAKA HK, VAROTSOS PA (2005) *Origin of the Usefulness of the Natural-Time Representation of Complex Time Series*. Phys Rev Lett 94:170,601.
- EICHNER JF, KANTELHARDT JW, BUNDE A, HAVLIN S (2007) *Statistics of return intervals in long-term correlated records*. Phys Rev E 75:011,128.
- FAWCETT T (2006) *An introduction to ROC analysis*. Pattern Recognition Lett 27(8):861–874.
- FLORES-MÁRQUEZ E, VARGAS C, TELESKA L, RAMÍREZ-ROJAS A (2014) *Analysis of the distribution of the order parameter of synthetic seismicity generated by a simple spring-block system with asperities*. Physica A 393:508–512.
- HOLLIDAY JR, RUNDLE JB, TURCOTTE DL, KLEIN W, TIAMPO KF, DONNELLAN A (2006) *Space-time clustering and correlations of major earthquakes*. Phys Rev Lett 97:238501.
- HUANG Q (2008) *Seismicity changes prior to the Ms8.0 Wenchuan earthquake in Sichuan, China*. Geophys Res Lett 35:L23308.
- HUANG Q (2011) *Retrospective investigation of geophysical data possibly associated with the Ms8.0 Wenchuan earthquake in Sichuan, China*. Journal of Asian Earth Sciences 41(45):421–427.
- HUANG Q, DING X (2012) *Spatiotemporal variations of seismic quiescence prior to the 2011 M 9.0 Tohoku earthquake revealed by an improved region-time-length algorithm*. Bull Seismol Soc Am 102:1878–1883.
- KANAMORI H (1978) *Quantification of earthquakes*. Nature 271:411–414.
- LENNARTZ S, LIVINA VN, BUNDE A, HAVLIN S (2008) *Long-term memory in earthquakes and the distribution of interoccurrence times*. EPL 81:69,001.
- LENNARTZ S, BUNDE A, TURCOTTE DL (2011) *Modelling seismic catalogues by cascade models: Do we need long-term magnitude correlations?* Geophys J Int 184:1214–1222.
- LIPPIELLO E, DE ARCANGELIS L, GODANO C (2009) *Role of static stress diffusion in the spatiotemporal organization of aftershocks*. Phys Rev Lett 103:038501.
- LIPPIELLO E, GODANO C, DE ARCANGELIS L (2012) *The earthquake magnitude is influenced by previous seismicity*. Geophys Res Lett 39:L05309.
- MANN HB, WHITNEY DR (1947) *On a test of whether one of two random variables is stochastically larger than the other*. Ann Math Statist 18:50–60.
- MASON SJ, GRAHAM NE (2002) *Areas beneath the relative operating characteristics (ROC) and relative operating levels (ROL) curves: Statistical significance and interpretation*. Quart J Roy Meteor Soc 128:2145–2166.
- RAMÍREZ-ROJAS AA, FLORES-MÁRQUEZ E (2013) *Order parameter analysis of seismicity of the Mexican Pacific coast*. Physica A 392(10):2507–2512.
- RUNDLE JB, HOLLIDAY JR, GRAVES WR, TURCOTTE DL, TIAMPO KF, KLEIN W (2012) *Probabilities for large events in driven threshold systems*. Phys Rev E 86:021106.
- SARLIS NV (2011) *Magnitude correlations in global seismicity*. Phys Rev E 84:022101.
- SARLIS NV, CHRISTOPOULOS SRG (2012) *Natural time analysis of the Centennial Earthquake Catalog*. CHAOS 22:023123.
- SARLIS NV, CHRISTOPOULOS SRG (2014) *Visualization of the significance of Receiver Operating Characteristics based on confidence ellipses*. Comput Phys Commun 185:1172–1176.
- SARLIS NV, SKORDAS ES, LAZARIDOU MS, VAROTSOS PA (2008) *Investigation of seismicity after the initiation of a Seismic Electric Signal activity until the main shock*. Proc Japan Acad, Ser B 84:331–343.
- SARLIS NV, SKORDAS ES, VAROTSOS PA (2010) *Order parameter fluctuations of seismicity in natural time before and after mainshocks*. EPL 91:59,001.
- SARLIS NV, SKORDAS ES, VAROTSOS PA, NAGAO T, KAMOGAWA M, TANAKA H, UYEDA S (2013) *Minimum of the order parameter fluctuations of seismicity before major earthquakes in Japan*. Proc Natl Acad Sci USA 110(34):13,734–13,738, doi:[10.1073/pnas.1312740110](https://doi.org/10.1073/pnas.1312740110).
- TELESKA L (2010) *Analysis of italian seismicity by using a non-extensive approach*. Tectonophysics 494:155–162.
- TELESKA L, LOVALLO M (2009) *Non-uniform scaling features in central Italy seismicity: A non-linear approach in investigating seismic patterns and detection of possible earthquake precursors*. Geophys Res Lett 36:L01308.
- TELESKA L, LAPENNA V, VALLIANATOS F (2002) *Monofractal and multifractal approaches in investigating scaling properties in temporal patterns of the 1983–2000 seismicity in the Western Corinth Graben (Greece)*. Phys Earth Planet Int 131:63–79.
- TELESKA L, LOVALLO M, RAMÍREZ-ROJAS A, ANGULO-BROWN F (2009) *A Nonlinear Strategy to Reveal Seismic Precursory Signatures in Earthquake-related Self-potential Signals*. Physica A 388:2036–2040.
- TELESKA L, LOVALLO M, CARNIEL R (2010) *Time-dependent Fisher Information Measure of volcanic tremor before 5 April 2003 paroxysm at Stromboli volcano Italy*. J Volcanol Geotherm Res 195:78–82.
- TELESKA L, CHAMOLI A, LOVALLO M, STABILE T (2014) *Investigating the tsunamigenic potential of earthquakes from analysis of the informational and multifractal properties of seismograms*. Pure Appl Geophys. doi:[10.1007/s00024-014-0862-3](https://doi.org/10.1007/s00024-014-0862-3).
- TENENBAUM JN, HAVLIN S, STANLEY HE (2012) *Earthquake networks based on similar activity patterns*. Phys Rev E 86:046107.
- TURCOTTE DL (1997) *Fractals and Chaos in Geology and Geophysics*, 2nd edn. Cambridge University Press, Cambridge.
- VAROTSOS P, ALEXOPOULOS K (1984a) *Physical Properties of the variations of the electric field of the earth preceding earthquakes, I*. Tectonophysics 110:73–98.
- VAROTSOS P, ALEXOPOULOS K (1984b) *Physical Properties of the variations of the electric field of the earth preceding earthquakes, II*. Tectonophysics 110:99–125.
- VAROTSOS P, ALEXOPOULOS K (1986) *Thermodynamics of Point Defects and their Relation with Bulk Properties*. North Holland, Amsterdam.

- VAROTSOS P, LAZARIDOU M (1991) *Latest aspects of earthquake prediction in Greece based on Seismic Electric Signals*. Tectonophysics 188:321–347.
- VAROTSOS P, ALEXOPOULOS K, NOMICOS K, LAZARIDOU M (1988) *Official earthquake prediction procedure in Greece*. Tectonophysics 152:193–196.
- VAROTSOS P, ALEXOPOULOS K, LAZARIDOU M (1993) *Latest aspects of earthquake prediction in Greece based on Seismic Electric Signals, II*. Tectonophysics 224:1–37.
- VAROTSOS P, EFTAXIAS K, LAZARIDOU M, ANTONOPOULOS G, MAKRIIS J, POLIYIANNAKIS J (1996a) *Summary of the five principles suggested by Varotsos et al. [1996] and the additional questions raised in this debate*. Geophys Res Lett 23:1449–1452.
- VAROTSOS P, EFTAXIAS K, VALLIANATOS F, LAZARIDOU M (1996b) *Basic principles for evaluating an earthquake prediction method*. Geophys Res Lett 23:1295–1298.
- VAROTSOS P, SARLIS N, SKORDAS E (2011a) *Scale-specific order parameter fluctuations of seismicity in natural time before mainshocks*. EPL 96:59,002.
- VAROTSOS PA, SARLIS NV, SKORDAS ES (2011b) *Natural Time Analysis: The new view of time. Precursory Seismic Electric Signals, Earthquakes and other Complex Time-Series*. Springer-Verlag, Berlin Heidelberg.
- VAROTSOS P, SARLIS N, SKORDAS E (2012a) *Remarkable changes in the distribution of the order parameter of seismicity before mainshocks*. EPL 100:39,002.
- VAROTSOS P, SARLIS N, SKORDAS E (2012b) *Scale-specific order parameter fluctuations of seismicity before mainshocks: Natural time and detrended fluctuation analysis*. EPL 99:59,001.
- VAROTSOS PA, SARLIS NV, SKORDAS ES (2012c) *Order parameter fluctuations in natural time and b-value variation before large earthquakes*. Natural Hazards and Earth System Science 12:3473–3481.
- VAROTSOS PA, SARLIS NV, SKORDAS ES (2001) *Spatio-temporal complexity aspects on the interrelation between seismic electric signals and seismicity*. Practica of Athens Academy 76:294–321.
- VAROTSOS PA, SARLIS NV, SKORDAS ES (2002) *Long-range correlations in the electric signals that precede rupture*. Phys Rev E 66:011902.
- VAROTSOS PA, SARLIS NV, TANAKA HK, SKORDAS ES (2005) *Similarity of fluctuations in correlated systems: The case of seismicity*. Phys Rev E 72:041103.
- VAROTSOS PA, SARLIS NV, SKORDAS ES, LAZARIDOU MS (2013) *Seismic electric signals: An additional fact showing their physical interconnection with seismicity*. Tectonophysics 589:116–125.

(Received June 26, 2014, revised August 13, 2014, accepted August 30, 2014)